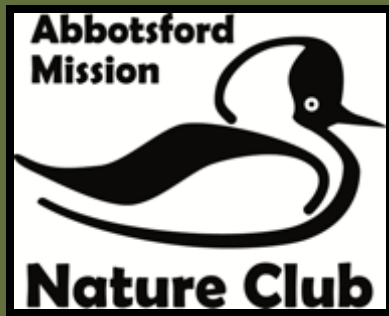


AMNC CHRISTMAS MEETING PROGRAM

- 6:45 Welcome
- Social mixer/games - Rita
- Highlights of 2024 Show -- Wendy
- Refreshment and sales break
- Sing Along - ALL
- Wrap up





HIGHLIGHTS

2024



AMNC Board 2024

Hank Roos

(Past President;
Willband Creek Park; BC Nature
Rep)

Sheila Flavelle

(Secretary)

Ken Summers

(Conservation)

Wendy DaDalt

(Co-chair; Hogan
Family Nature Park)

John Vissers

(Co-chair)

Rita Bot

(Membership; Displays)

Alice Roos

(Bulletins, etc.)

Quirien Mulder ten Kate

(Programs)

Lindsay Babineau

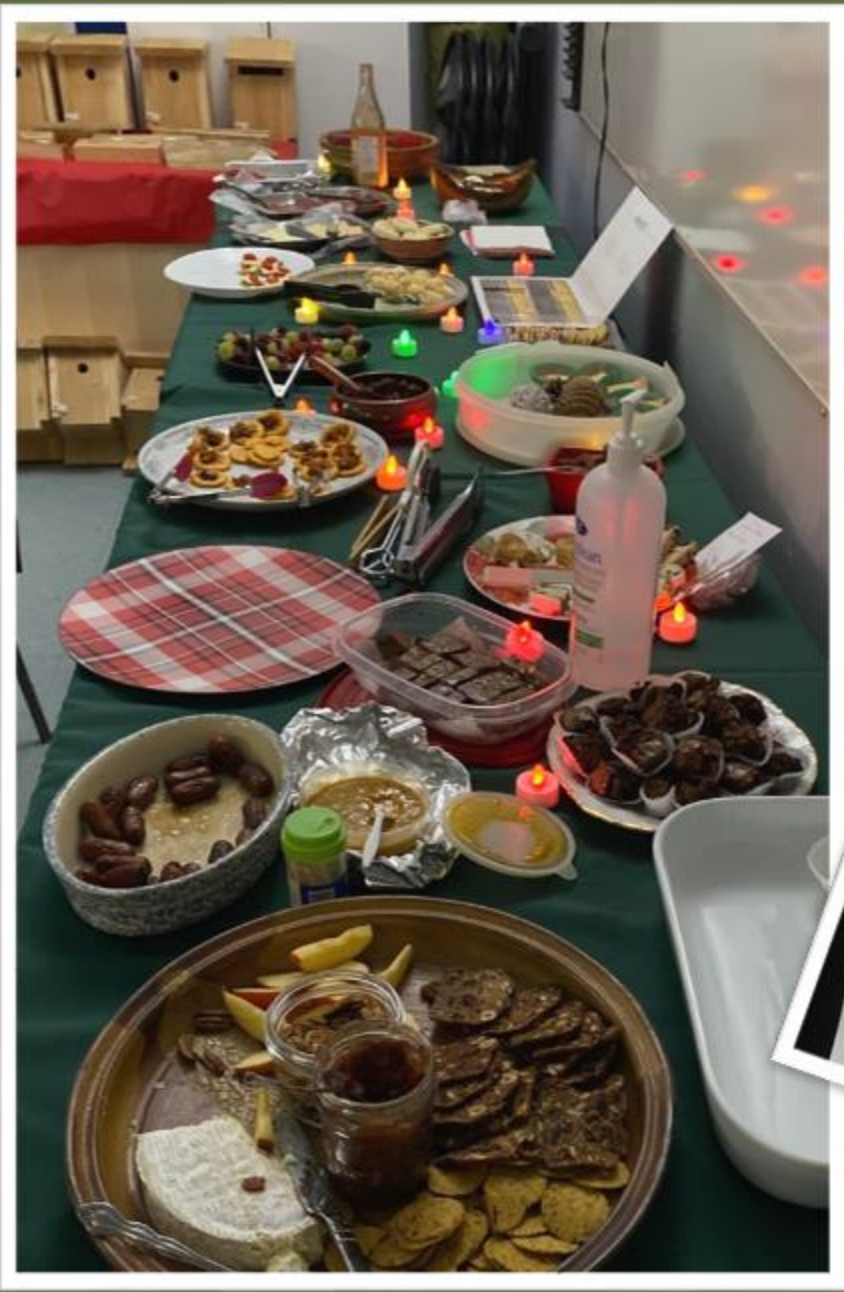
(Treasurer)

Vacancies

(Communications;
Field trips)

CLUB ACTIVITIES 2024

- ▶ Club meetings
 - ▶ 2nd Wednesday September to June
- ▶ Events, Field Trips, Outreach
 - ▶ Christmas Bird Count -- *coming up December 30*
 - ▶ BC Nature AGM - May - *coming up May 20-24*
 - ▶ Field Trips & Summer Walks
- ▶ Projects
 - ▶ Willband Creek Park
 - ▶ Matsqui Trail Wildlife Enhancements
 - ▶ Hogan Family Nature Park Stewardship
 - ▶ Ravine Park Hatchery Visitor Enhancements



Christmas Party 2023





Christmas Party 2023

Reifel Bird Sanctuary
-- February





Great Blue Heron Reserve-
March





Stave Interpretive Forest
Mission -- May





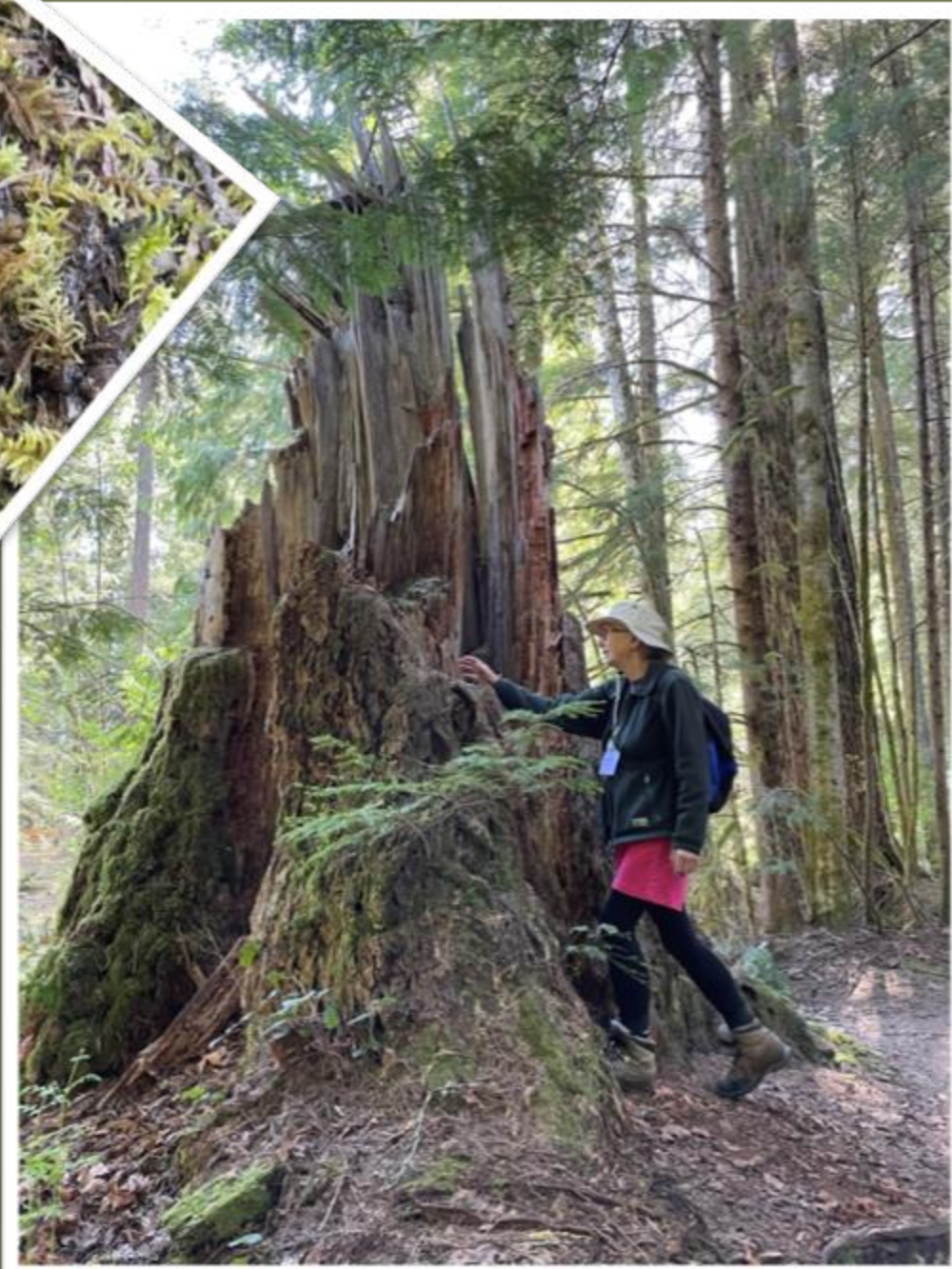
BC Nature AGM May -Arrowsmi
Naturalists Hosts
Qualicum







Merritt
May 22-25



McDonald Park/Sumas River
June Picnic



Manning Park
Heather Meadow's --
July









Sumas Mountain
Old Growth
July





Campbell Valley Regional
Park
July

















Hillkeep Regional Park
July



How's the view?

Sometimes the mountains seen from this platform are not clear, or you can't see them at all. This is often determined by air quality.

Haze, or poor visibility, results when sunlight interacts with certain gases or tiny particles (smaller than a grain of pollen). These pollutants in the air absorb or scatter sunlight, making objects in the scenery less vivid.

Pollution not only diminishes the view, but it can harm your health and damage the park's plants, soil and water.

Parks, plants and air quality - what's the connection?

The Fraser Valley Regional District has many forested landscapes, and these trees play an important role in reducing air pollution.

When plants grow, they absorb carbon dioxide and other polluting gases. Plants also filter out tiny particles that can get into your lungs and cause damage.

Our parks and forests provide clean, fresh air and protect important ecosystems.

Visit www.fvrd.ca/airquality to learn more about air quality.

How can you improve air quality?

- Walk or cycle.
- Choose electric garden tools.
- Get regular tune ups.
- Avoid burning, use your compost.
- Consider a cleaner vehicle.
- Take transit.

Cheam

Lady

Knight

Welch

Archibald

Elk Thurston

McFarlane

Crossover

Sleske

McGuire







Willband Creek Park
-- September



Brae Island Regional Park
Mosses -- October





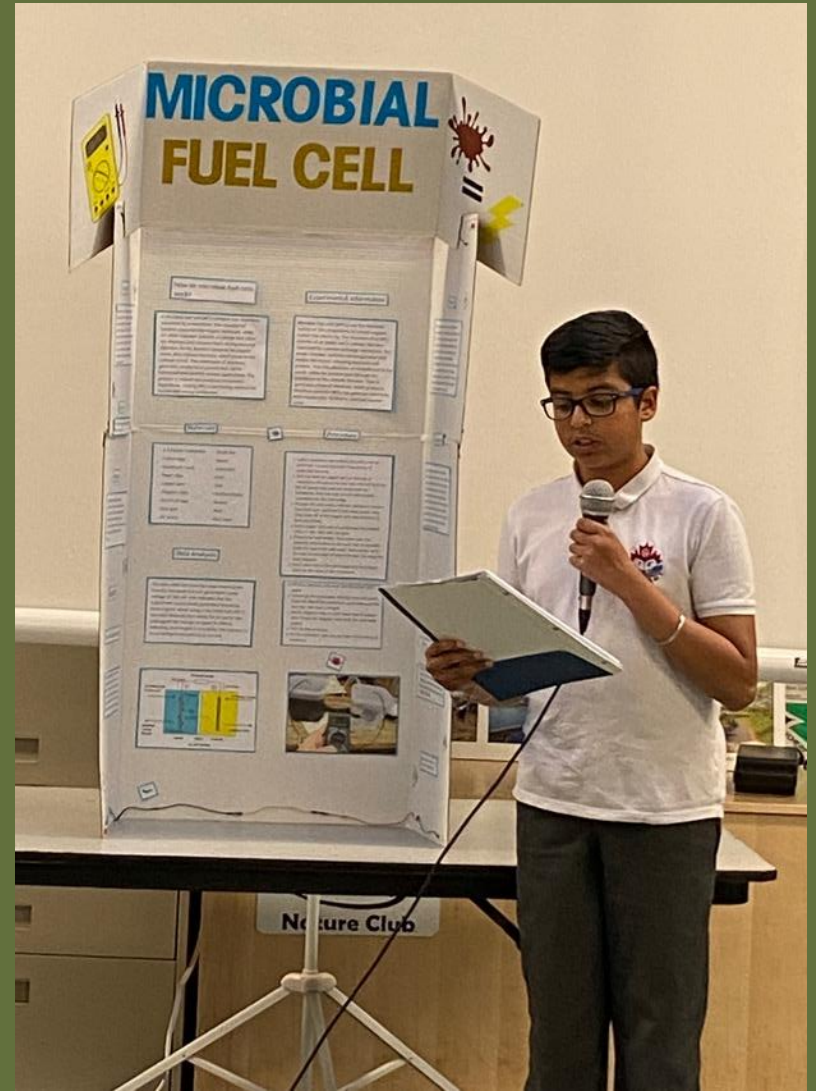
Harrison Mills
Bald Eagles -- November



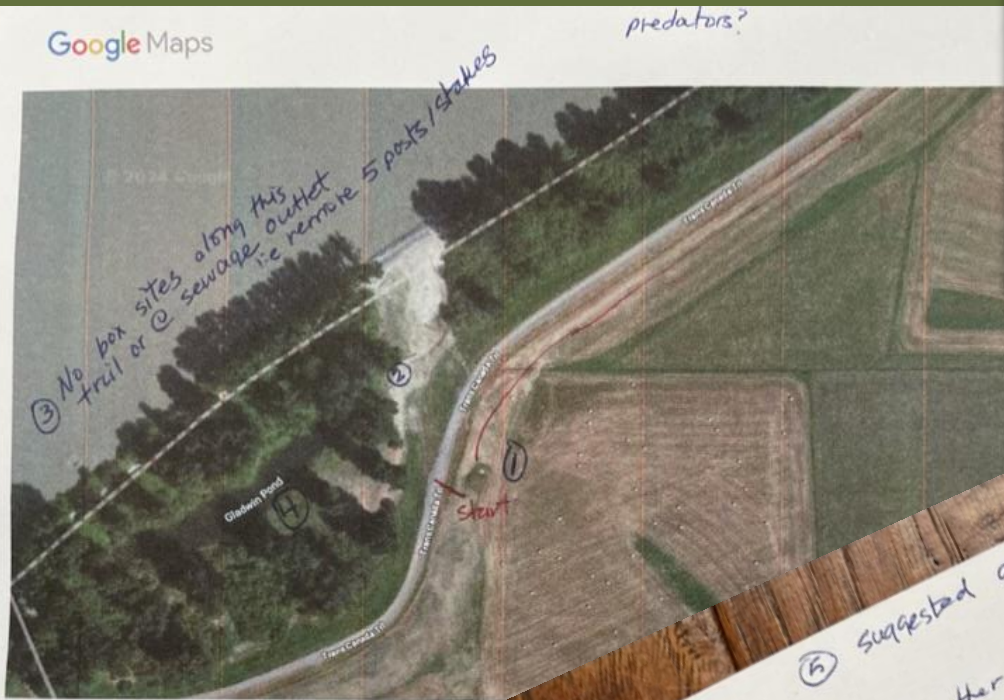


Club Projects

Science Fair Winners



Swallow and Bat Boxes - Matsqui Trail



- ① South fence line @ widest area
On new 2mt poles driven a few
separate 100ft apart.
3-5 depending how far east of
- ② in open area disturbed by water.
1 box



Willband Creek Projects
Duck box cleaning-
February/March



Willband Creek Park
Basking Logs -- February





Willband Creek Park
Blackberry Removal
October



9 November



First Barn Owl Box



Willband Creek Park
Second Barn Owl Box-- May







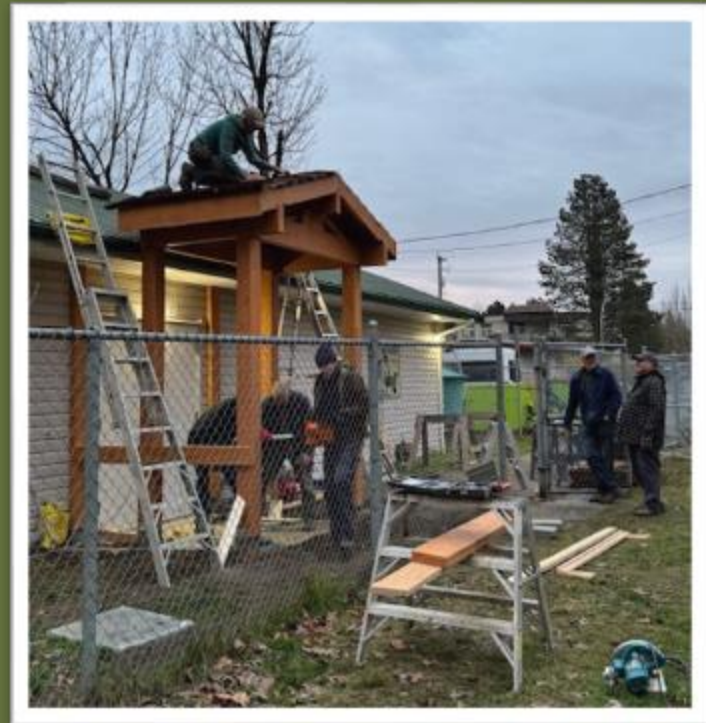






Ravine Park
Hatchery
Enhancements





Puzzles \$375!



Abbotsford
Kiwaniis
Foundation
\$1,000



Donated work
vests with club
logo

RONA \$300

Ravine Park
Salmon
Enhancement
Society



Bakesale approx. \$150



SEASON'S
GREETINGS!

*"To Know Nature and Keep it
Worth Knowing"*

